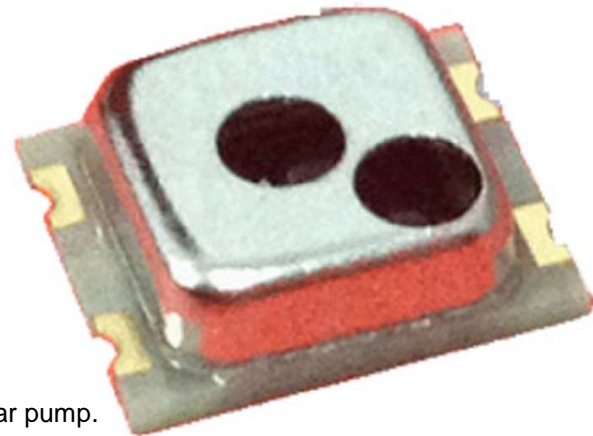


MAIN FEATURES:

- Ranges. -0~100kPa...500kPa (0~15psi...75psi)
- Percet accuracy ($\pm 1.0\%$) FS
- Absolute type
- For non-corrosive gas or dry air
- Calibrated, amplified analog output
- Working Temp.: -0°C ~ +70°C

APPLICATIONS:

- For automotive electronics field, such as tire pressure meter, car pump.
- For barometer, altimeter, vacuum pressure measurement
- For pressure meter or pressure controller.



INTRODUCTION:

GM-6857 is a perfect silicon pressure sensor module with small size (4.7mmx5.6mmx1.76mm) including high performance sensor component, temperature sensor and ASIC chip, which is packaged together inside of metal housing. It's gel filling for protecting the sensor and wire, and it's available in moist environment. This sensor is fully calibrated and temperature compensated for offset, sensitivity, temperature and non-linearity and supply the standard outout signal.

PRESSURE RANGE:

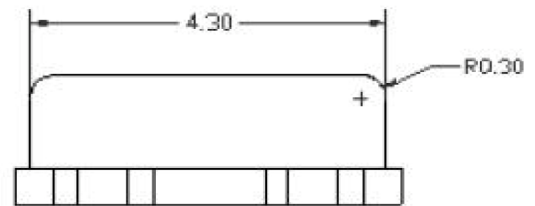
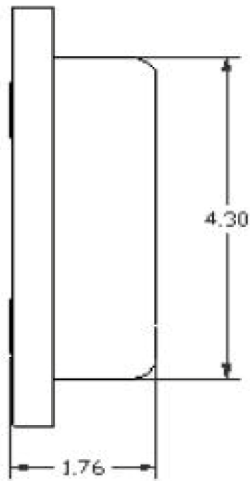
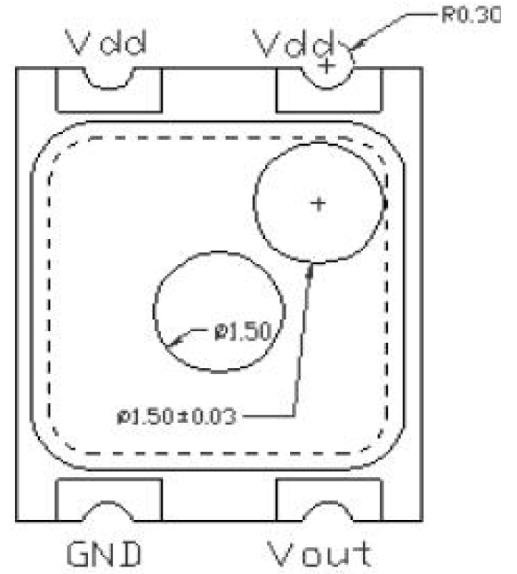
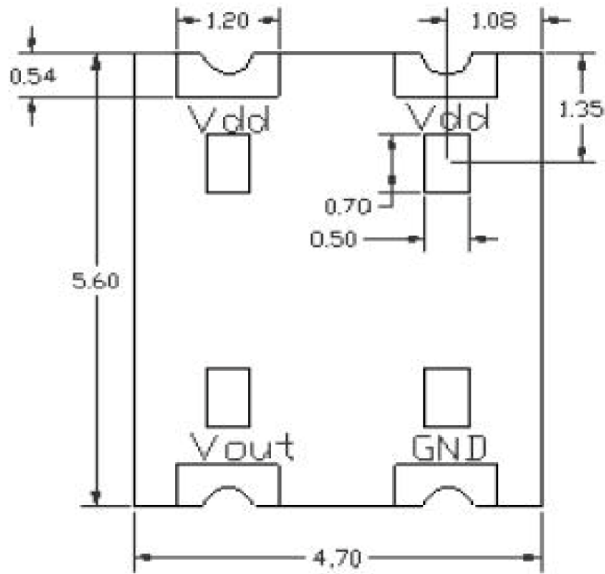
0~102.4 kPa	100~250 kPa
0~117 kPa	10~450 kPa
Available for more custom pressure range	

PERFORMANCE PARAMETER:

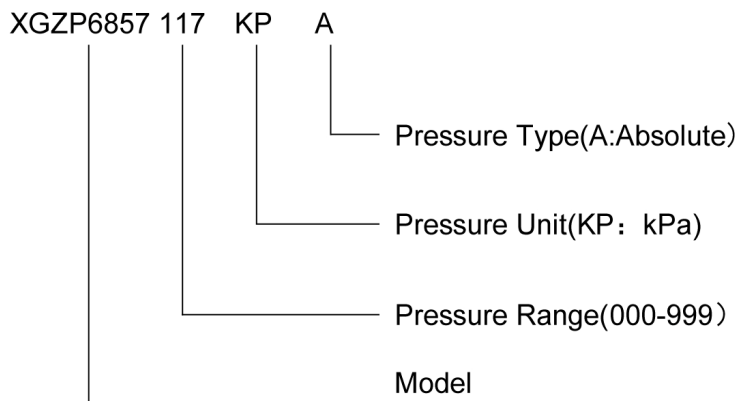
Unless otherwise specified, measurements were taken with a supply voltage of 5Vdc at a temperature of 25 \pm 1°C and humidity ranging from 25%~85.

Item	Data
Min. output signal	0.25 \pm 0.1V
Max. output signal	4.75 \pm 0.1V
Span output	4.5V
Accuracy	$\pm 1.0\%$ span
Temp. coefficient of offset	$\pm 0.03\%$ FS°C
Temp. coefficient of span	$\pm 0.03\%$ FS°C
Ling term stability	$\pm 2\%$ span
Over pressure	2X
Compensation Temp.	0°C ~ 85°C
Ambient Temp.	-20°C ~ 85°C
Storage Temp.	-40°C ~ 125°C
Max. input current	3 mADC
Max. output current	3 mADC
Power-on time	<10 msec
Response time	<3 msec

OUTLINE DIMENSIONS:



Order Guide



Global Measurement Srl
 Via Olona 183/N, 21013 GALLARATE (VA)
 Tel: 0331/786999 Fax: 0331/213964
info@global-measurement.it www.global-measurement.it